

## Guide for Series IV Inverted Installations

For reels with 1-1/2" I.D. hub assembly to handle 1-1/4" through 2" I.D. hose.

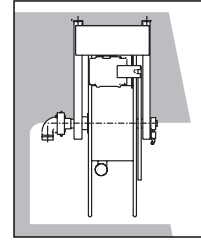
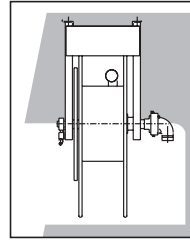
When ordering a reel for inverted installation, please specify which of the following component locations you prefer. Please specify component location by letter. If not otherwise specified, reels will be shipped as shown in A.

FROM CURBSIDE

FROM STREETSIDE

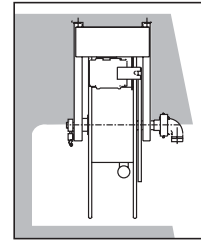
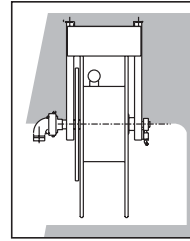
### Installation A

Hose unwinds from top of reel to curbside and from bottom of reel to street-side. Swivel joint is on side nearest tank. Rewind mechanism and braking devices are at the rear of the truck. Rewind motor is on streetside.



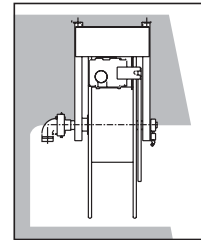
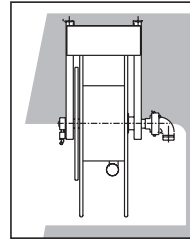
### Installation B

Hose unwinds from top of reel to curbside and from bottom of reel to street-side. Swivel joint, rewind mechanism, braking and locking devices are at the rear of the truck. Rewind motor is on streetside.



### Installation C

Hose unwinds from bottom of reel to curbside and from top of reel to street-side. Swivel joint is on side nearest tank. Rewind mechanism, braking and locking devices are at the rear of the truck. Rewind motor is on streetside.



Family owned and operated since 1933, Hannay Reels is a leader in both OEM and aftermarket applications. Hannay offers thousands of standard hose reel and cable reel models, as well as unmatched custom capabilities. We can easily and affordably customize a reel to meet your exact specifications – built to last, delivered fast. Additional catalogs are available through your local Hannay Reels dealer or online at [www.hannay.com](http://www.hannay.com).



**Hannay Reels®**  
The reel leader.

553 State Route 143 • Westerlo, New York 12193-0159  
Toll Free Phone: 1-877-GO-REELS • Toll Free Fax: 1-800-REELING

E-mail: [reels@hannay.com](mailto:reels@hannay.com)

Intl. Phone: 1-518-797-3791 • Intl. Fax: 1-518-797-3259

**[www.hannay.com](http://www.hannay.com)**



MADE IN U.S.A.